

Pallet Racking - Pallet Flow

Visit www.dexion.ie/en/Product-Categories/Pallet-Racking/Pallet-Flow/ for the latest information.

Create functional and logical warehouse storage with the right pallet racking system.

Pallet racking can be configured in a variety of ways and systems, depending on the customer's requirements and pallet load.

Whether its frozen food in a cold store utilising either **Drive-in racking** or **mobile racking** (MOVO), or bulk goods, such as products with a "best before date", that are stored on a FIFO (first in first out) **pallet flow** system, all goods stored on pallets will be ideally stored by one of these methods as this provides optimal storage economics.

Click here for [a comparison of the different Pallet racking systems](#), make sure you get the right one for your warehouse.

Pallet Flow is a product in the category

Pallet Racking

- P90 Standard Wide Aisle
- Mobile Pallet Racking
- Multi-tier Pallet Racking
- Narrow Aisle Racking
- Carton Flow
- Pull-Out Unit
- Drive-in Racking
- Pallet Shuttle System
- Push Back - Trolleys
- Push Back - Rollers
- Pallet Flow**
- Rack83
- Premierack Wide Aisle
- Pallet Racking Comparison

Please visit www.dexion.ie to see our other products.

Description

Pallet Flow racking, otherwise known as *Pallet Live Storage*, is suitable for FIFO (First In First Out) storage of goods with a high rate of turnover and fast access to goods is required, but utilises up to 60% less space than a conventional pallet racking warehouse.

The Dexion Pallet Flow racking system is mainly used when a limited range of palletised goods needs to be stored in large quantities using the first-in, first-out principle. At the on-load face, pallets are placed in storage lanes and automatically roll forward on sloping wheel conveyors under the force of gravity. Pallet speed down the lane is controlled by a series of brake rollers and when the pallets reach the retrieval face, they are brought to a controlled halt by a combined load separator and end stop unit.

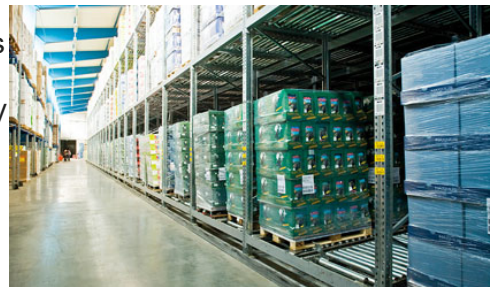
This type of storage technology, which is frequently used in the drinks industry or as a buffer storage facility in the manufacturing industry, requires only two fork truck aisles, one for loading and one for retrieval.

Benefits:

[Pallet Racking](#) › [Pallet Flow](#)

References

- ASKO Vest AS, Norway
Valsemollen
- Hansa Print, Finland
- Huhtamäki Oy, Finland





dexion.com

+44 800 581 531

- Up to 60% less floor space than conventional pallet racking
- First-in First-out (FIFO) operation provides automatic stock rotation
- Dedicated load and retrieval faces mean only two fork truck aisles are required
- Higher speed of operation within the warehouse

Don't know how to organise your storage?
Need help and advice designing your new warehouse layout?
[Contact us for help and advice by clicking on this link.](#)



Range

Dexion's Pallet Flow racking offers a wide range of track, wheel and roller arrangements to suit most types and sizes of pallet.

Guides, fitted at the on-load face, assist the forklift driver with pallet alignment.

An automatic braking system ensures that pallet movement is always safely under control. Pallets travel smoothly on full width or twin-track rollers.

A separator is used to retain the queue of pallets while the bottom one on the picking face is being taken out in safety.

Each installation is tailored to suit pallet size, weight and storage system requirement.



Specifications

Pallet Racking > Pallet Flow

The Dexion Pallet Flow system is a dynamic storage solution based on our pallet racking systems with integrated conveyor modules.

The system offers a wide range of conveyor modules to suit most types and sizes of pallets.

An automatic braking system ensures that pallet movement is always safely under control. Pallets travel smoothly on full width or twin-track rollers.

While the front pallet is removed on the front side of the rack, the rear pallet is held back with an appropriate device.

Standard Dimensions:

Channel Depth: Depends on the number of pallets

Channel Width:

- 1000 mm (1 lane)
- 2000 mm (2 lanes)
- 3600 mm (3 lanes)
- Block Height: Up to 12000 mm

Loading: Pallet Weight: Up to 1200 kg

Finish: Uprights: pre-galvanized

Beams: Pre-galvanized or painted

Accessories: Pre-galvanized or painted

Other dimensions can be manufactured according to customer and project requirements.

For more information on the system available in your country please select your country.



Accessories - Pallet Racking



Floor Mounted Column Guards

A substantial form of protection for pallet racking uprights, protects against low level impact damage caused by forklift trucks.



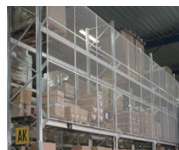
Snap on Upright Protectors

These upright protectors can absorb large impacts and is quickly attached to a pallet racking upright without the need for additional fasteners.



Rack End Protectors

A robust barrier ideal for protecting vulnerable areas from forklift damage and general low level impact.



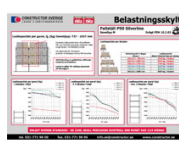
Anti Collapse Mesh

Metal mesh product that offers protection for a variety of scenarios. More info about [Anti Collapse Mesh](#)>>



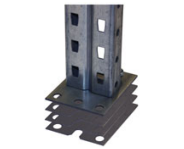
Sign & Marking system

Label holder, self-adhering or with magnetic tape for different kind of shelves and beams. More info about [Sign & Marking system](#)>>



Load and Assembly Signs

Signage for loading and assembly instructions, which can be mounted on the racks.



Levelling Plates

Leveling plates are used underneath uprights to correctly raise the height of an upright.



Locking Pins

Beam locking pins are required for safety in the connector, at each end of a beam.