

Pallet Racking - Drive-in - Deepstor

Visit www.dexion.ie/en/Product-Categories/Pallet-Racking/Deepstore/ for the latest information.

Create functional and logical warehouse storage with the right pallet racking system.

Pallet racking can be configured in a variety of ways and systems, depending on the customer's requirements and pallet load.

Whether its frozen food in a cold store utilising either **Drive-in racking** or **mobile racking** (MOVO), or bulk goods, such as products with a "best before date", that are stored on a FIFO (first in first out) **pallet flow** system, all goods stored on pallets will be ideally stored by one of these methods as this provides optimal storage economics.

Click here for [a comparison of the different Pallet racking systems](#), make sure you get the right one for your warehouse.

Drive-in Racking is a product in the category

Pallet Racking

- P90 Standard Wide Aisle
- Mobile Pallet Racking
- Multi-tier Pallet Racking
- Narrow Aisle Racking
- Carton Flow
- Pull-Out Unit
- Drive-in Racking**
- Pallet Shuttle System
- Push Back - Trolleys
- Push Back - Rollers
- Pallet Flow
- Rack83
- Premierack Wide Aisle
- Pallet Racking Comparison

Please visit www.dexion.ie to see our other products.

Description

P90 Drive-in racking is ideal for storing large quantities of the same type of goods: your existing space can be used up to 90% more effectively with Drive-in racking compared to standard, conventional pallet storage systems.

Drive-in racking is suitable for goods that can be stored on pallets behind or on top of each other, but ideal when greater access is required compared to block stacking. Pallets are stacked by the first-in, last-out (FILO) principle on supports mounted on both sides of the drive-in channels. This means that individual pallets cannot be accessed directly, but one by one from the front of the rack.

As a form of block stacking, drive-in racking systems significantly increase the storage density in a warehouse. Consequently, the existing space can be used up to 90% more effectively than with conventional pallet storage systems.

Drive-in racking eliminates the need for loading and picking aisles. The lift truck positions pallets on front-to-back rails, allowing rows to be stacked next to each other. Dexion drive-in racking provides a safe and efficient equivalent of block stacking for loads which are too fragile or unstable to be stacked on top of each other.

[Pallet Racking](#) › [Drive-in Racking](#)

References

- Bristol Port, UK
- Staples, Germany
- Huhtamäki Oy, Finland



Benefits of Drive-in Racking

- High density storage - maximising cubic space
- More pallets stored per cubic metre than any other storage system
- Limited stock rotation - particularly suitable for seasonal goods
- Ideal for cold and chill storage applications
- Accessible by the First-In, Last-Out principle
- Used for bulk goods of the same type

Don't know how to organise your storage?
Need help and advice designing your new warehouse layout?
[Contact us for help and advice by clicking on this link.](#)

Range

Smooth pallet rails provide a safe, snag-free load-bearing surface. The rails are carried on brackets that slot into the uprights. Like regular Speedlock pallet racking beams, they're adjustable by 50mm, and secured with an automatic safety lock. Brightly coloured pallet guides help drivers position loads quickly and accurately





dexion.com
+44 800 581 531

Specifications

Heights up to 14 m

Pallet loads of up to 1500 kg

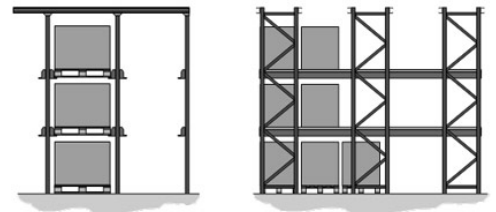
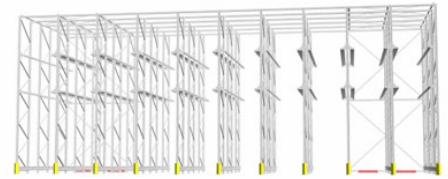
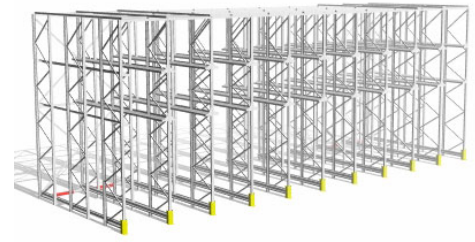
Compartment heights up to 3000 mm

Compartment widths up to 1800 mm

Temperature range from -35 to +35 C

For more information on the system available in your country please [select your country](#).

Pallet Racking › Drive-in Racking



Accessories - Pallet Racking



Floor Mounted Column Guards

A substantial form of protection for pallet racking uprights, protects against low level impact damage caused by forklift trucks.



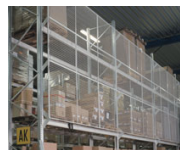
Snap on Upright Protectors

These upright protectors can absorb large impacts and is quickly attached to a pallet racking upright without the need for additional fasteners.



Rack End Protectors

A robust barrier ideal for protecting vulnerable areas from forklift damage and general low level impact.



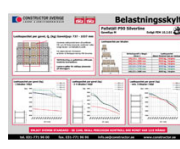
Anti Collapse Mesh

Metal mesh product that offers protection for a variety of scenarios. More info about [Anti Collapse Mesh](#)>>



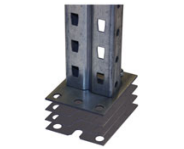
Sign & Marking system

Label holder, self-adhering or with magnetic tape for different kind of shelves and beams. More info about [Sign & Marking system](#)>>



Load and Assembly Signs

Signage for loading and assembly instructions, which can be mounted on the racks.



Levelling Plates

Leveling plates are used underneath uprights to correctly raise the height of an upright.