

HOCA Horizontal Carousel

Visit www.dexion.hu/en/Product-Categories/Storage-Machines-and-WMS/Horizontal-Carousel-HOCA/ for the latest information.

(Dynamic) Storage (and retrieval) machines – Automated solutions for efficient warehousing.

Highly efficient picking and packing, fast provision of small parts, quick delivery of ordered goods all delivered by the most efficient the route possible, to minimise operator walking and waiting times, it's all possible with Dexion's dynamic storage and retrieval machines (systems).

Custom-designed to suit individual requirements, the ultra-fast TORNADO storage machine and the Vertical Carousel are both designed to maximise building height while standing on small footprints. Alternatively, the HOCA Horizontal Carousel is the optimal solution for buildings with restricted ceiling heights yet large floor space.

Horizontal Carousel (HOCA) is a product in the category

Storage Machines and WMS

- Lift Systems (TORNADO)
- Vertical Carousel (PATERNOSTER)
- Horizontal Carousel (HOCA)
- PaC-Light Update package
- C-WIS Warehouse Intelligence Systems
- WMS and Control Software

Please visit www.dexion.hu to see our other products.

Description

Storage Machines and WMS › Horizontal Carousel (HOCA)

The principle of a horizontal carousel is easy – it makes optimal use of existing room length if overhead space is missing.

In practice, the optimal warehouse fill rate – in relation to the available storage space – is 80% to (maximum) 90%. Depending on existing building structures and lack of overhead space, Dexion's HOCA horizontal carousel makes optimal use of the available room depth.

Horizontal carousels guarantee cost-effective warehousing and efficient picking processes. "Keeps everything moving round". With horizontal carousels, the goods are transported to a picking station at the front of the carousel, fast and with pin-point accuracy. Whether you store small parts in bins or boxes, the Dexion HOCA offers ample space for articles of various dimensions and shapes.

Our automated HOCA Horizontal Carousel allows you to:

References

Grohe AG, Germany
Hospital Pharmacy Dresden-Friedrichstadt





- ✓ Dramatically increase your storage capacity through optimal use of the available room depth
- ✓ Reduce operators walking and waiting times to a minimum
- ✓ Avoid picking errors
- ✓ Guarantee fast, efficient and accurate order performance
- ✓ Speed up order throughput times
- ✓ Achieve maximum storage density

The HOCA is the ideal solution when it comes to:

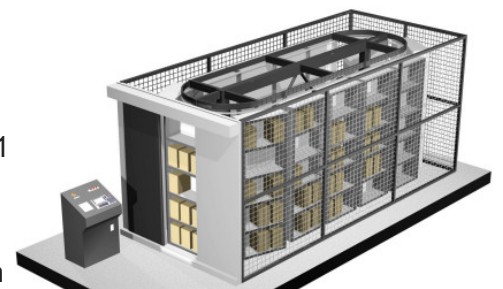
- ✓ Storing small and medium-sized parts
- ✓ Warehouses with a large range of different goods
- ✓ High product turnover
- ✓ Safe, clean and well-organised storage
- ✓ Multi-level operation, meaning that 1 operator can pick efficiently and with pinpoint accuracy

Products

A must-have for your warehouse!

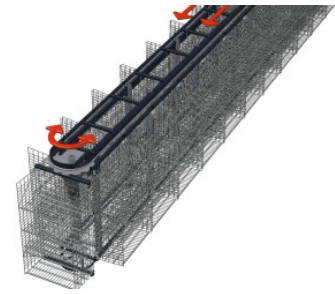
The combination of multiple horizontal carousels (HOCA) belonging to 1 picking station and operating simultaneously guarantees permanent access to the stored goods.

Access openings concentrated on the smallest footprint guarantee high picking performance while significantly increasing your warehouse



picking performances while significantly increasing your warehouse efficiency.

While the operator picks from one carousel, the other machines in the background are bringing the next requested order line for delivery at the access point, therefore reducing operator waiting time to a minimum.

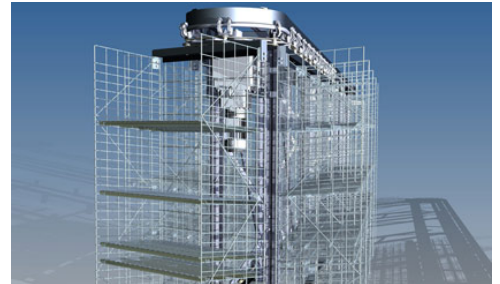


- **Saves up to 65% order picking time** compared to static systems e.g. racking systems
- **Optimal storage density** through full utilisation of **available room depth**
- **Saving man power resources** by simultaneous operation of several horizontal carousels through one single operator
- **High degree of picking accuracy** through batch-picking, barcode check and pick-by-light operation (optional accessories)
- **Ergonomic operation** through ideal "goods-to-person" principle
- **Flexible modular system** to existing building structures, stored goods and product ranges, an expandable system
- **Optimal protection of stored goods** for secure access and against dust and dirt
- **Safety for persons and stored goods** with sensor-controlled, automatically operated glass doors
- **Flexible and easy** implementation into existing IT-structures
- **Integration of peripheral devices** for easy and paperless order picking (scanner, scales, SPS)

Specifications

Storage Machines and WMS › Horizontal Carousel (HOCA)

Technical data



Bay widths	830 and 1010 mm
Bay depths	508 and 608 mm
Tray capacity	100 kg
Shelf division	60 and 120 mm
Bay capacity	600 kg
Total capacity max.	max. 40.000 kg
Total widths	1.700 and 1.900 mm
Total length	50 m max.
Overall heights	2.150 to 4.350 mm