

Warehouse Management Systems / Article Management Software

Visit www.dexion-storage.ch/en/Product-Categories/Storage-Machines-and-WMS/WMS-and-Control-Software/ for the latest information.

Automatic Storage Machines are computer-controlled storage and transfer systems that can significantly improve the efficiency of product storage and picking.

These machines are easy to integrate with a Company's existing Warehouse Management System (WMS), but they can also be used as a standalone system. The site and operating environment determines the system's size and composition.

An automatic storage system can save up to 70% on floor space, reduce picking errors by 70% and decrease picking time by more than 60%. The most efficient way of using storage machines is to have article management included with the machine. TC2000 article management software is especially developed for Tornado, Paternoster and HOCA and it can be included as standard to all our machines.

WMS and Control Software is a product in the category

Storage Machines and WMS

- Lift Systems (TORNADO)
- Vertical Carousel (PATERNOSTER)
- Horizontal Carousel (HOCA)
- PaC-Light Update package
- C-WMS Warehouse Intelligence Systems
- WMS and Control Software

Please visit www.dexion-storage.ch to see our other products.

Description

Storage Machines and WMS > WMS and Control Software

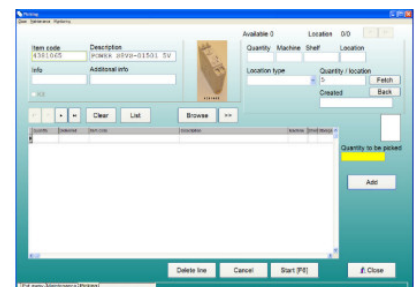
TC2000 is a WMS system that has been developed for use with storage automates. It can be used as a standalone system or connected easily to existing WMS system.

TC2000+ is a complete WMS system that can be used when there are both machines and static racking in the warehouse. The picking will be done with handheld PDA's.

TC2000 software knows the stock items, storage locations, and inventories. The software enables the control of the warehouse from simplistic inventory control to complex batch-picking systems that can contain multiple Tornados, Paternosters and Horizontal Carousels.

Related products

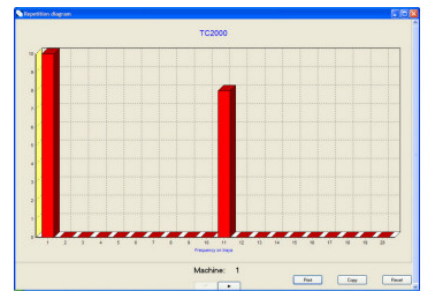
Lift Systems (TORNADO)





dexion.com

+44 800 581 531



The figure shows a software interface for order management. At the top, there is a "Scan" button. Below it, a section titled "Orders" shows "Total new orders: 0" and "Total new lines: 0". There are two tabs: "Unfinished/finished (All)" and "Selected lines". The "Unfinished/finished (All)" tab is active, showing "Number of orders: 0" and "Number of lines: 0". There are "Delete" and "Update" buttons next to these counts. At the bottom, there is a section for "Orders (Purchase orders)" with a "Start packing" button and a "Close" button. The interface is mostly green and blue.

Features

Storage Machines and WMS › WMS and Control Software

- Picking
- Put away
- Inventory
- Clear graphics that show all operations
- Moving items inside the warehouse
- Good reporting
- Repetition diagrams for different warehouse areas and shelves
- Transaction history (who, what, when)
- Graphics monitoring of warehouse filling rate
- Monitoring of storage location types
- Monitoring of loading items
- Possibility of printing various labels during picking and put away
- FIFO, Floating storage locations, Fixed storage locations with or without quantity management
- Control data of a warehouse directly from the host system
- Support for controlling separate production batches of a single item per storage location concerned
- Several different language options
- Miscellaneous control of user accounts and their user rights
- Item weight control
- Connection of pictures or drawings
- Serial number connection to items