

Pull-out Units:

Ergonomic and safe
order picking



Achieve 30% more
storage capacity from
your pallet racking ”



Pull-out Unit

**Ergonomic, route-
optimised, fast and
safe order picking**

● **HIGH STORAGE DENSITY,
MAXIMUM UTILISATION OF
AVAILABLE SPACE AND
INCREASE PICKING STATIONS**

● **EASY ACCESS TO THE PALLET
FROM 3 SIDES, REDUCE FORKLIFT
DURATIONS**

● **REDUCES THE RISK OF INJURY
AND PHYSICAL STRESS TO
EMPLOYEES**

Advantages of Pull-out Units

5 Good Reasons to choose Pull-out Units

- 1** TRANSFORMS THE PALLET RACK INTO A DRAWER RACK
- 2** FLEXIBLE - VARIOUS VERSIONS AVAILABLE WITH DIFFERENT LOAD CAPACITIES
- 3** ACHIEVE HIGH-DENSITY STORAGE AND CREATE ADDITIONAL PALLET SPACES
- 4** SAFE AND EFFORTLESS PALLET EXTRACTION AND RETURN, POSSIBILITY TO OPERATE FROM BOTH SIDES (FRONT AND BACK)
- 5** MAXIMUM SAFETY ASSURED, DUE TO THE PULL-OUT STOP. ZERO RISK OF THE PALLET FALLING OUT

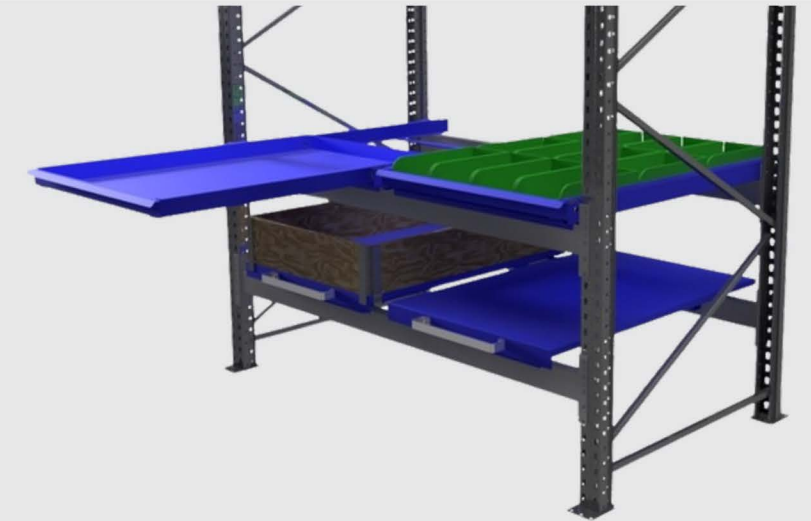
The Right Pull-out Unit for Every Storage Requirement

- Available in 3 different variations: **Floor**, **Upright** or **Beam** mounted
- Pull-out units also available in an **electric version** and as a **2way-pull-out unit**
- **Different load capacities** can be realised depending on requirements
- **Wide range of accessories** such as different handles, supports and partitioning options for further customisation

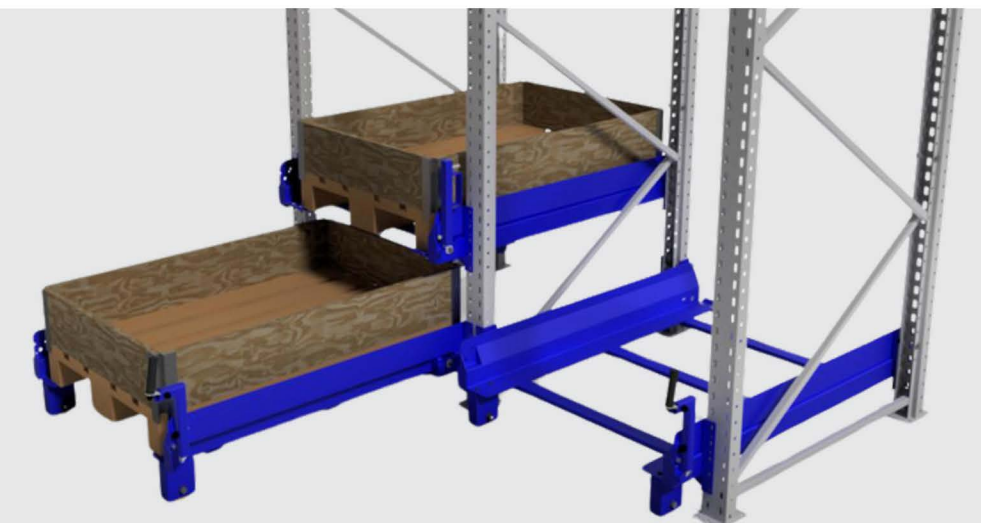
FLOOR MODELS
LOAD UP TO 1000 KG



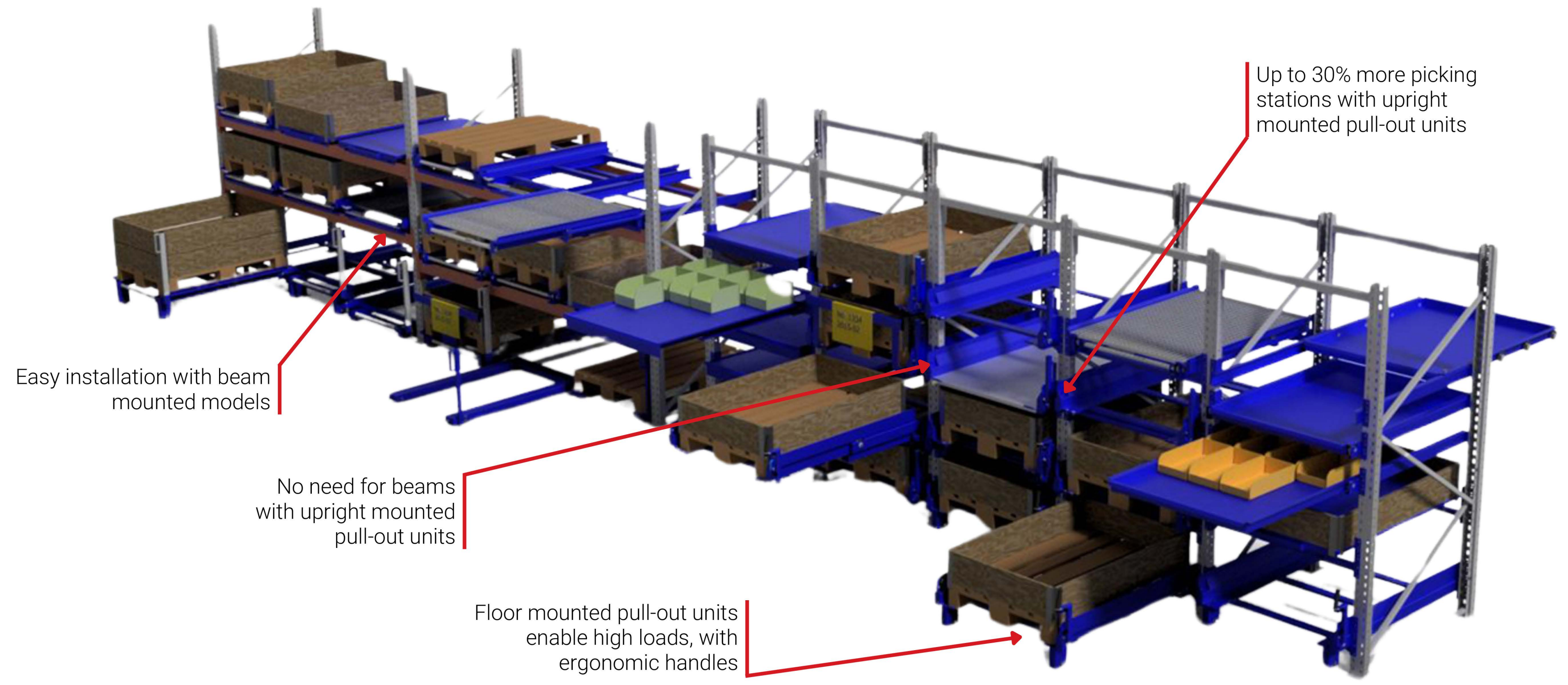
BEAM MODELS
LOAD 200 - 300 KG



UPRIGHT MODELS
LOAD 500 - 1000 KG



More Storage Capacity - More Picking Stations



Easy installation with beam mounted models

No need for beams with upright mounted pull-out units

Floor mounted pull-out units enable high loads, with ergonomic handles

Up to 30% more picking stations with upright mounted pull-out units



Let's discuss how Pull-out Units can revolutionise your warehouse logistics!

Get in touch with us!